



# SCHALTGERÄTE

## Komplett-Typen Baureihe ML

### Complete types Series ML

#### Hauptschalter

Bodeneinbau V  
Mit Schnappbefestigung auf  
Normschiene 35 mm (DIN EN 50022)

#### Main switches

Base mounting V  
Snap-on mounting on DIN rail  
EN 50022 standard 35 mm

#### Verteilereinbau

Mit Schraub- und Schnappbefestigung  
auf Normschiene 35 mm (DIN EN  
50022) Anschlusschrauben sind vorn  
zugänglich

Griff schwarz sw  
Frontschild grau gr

#### Distribution board mounting

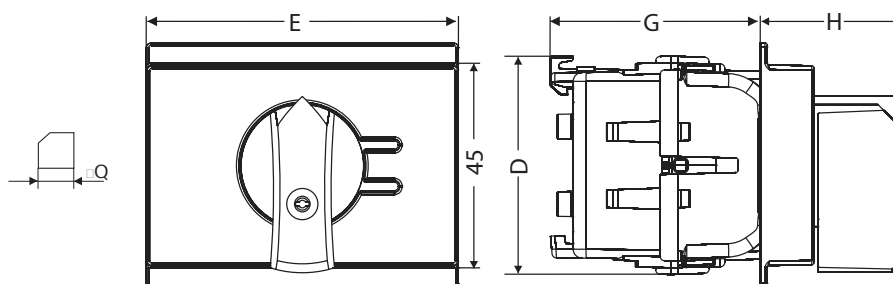
on DIN rail (EN 50022) standard 35 mm terminal  
screws are accessible from the front

handle black bk  
front plate grey gr

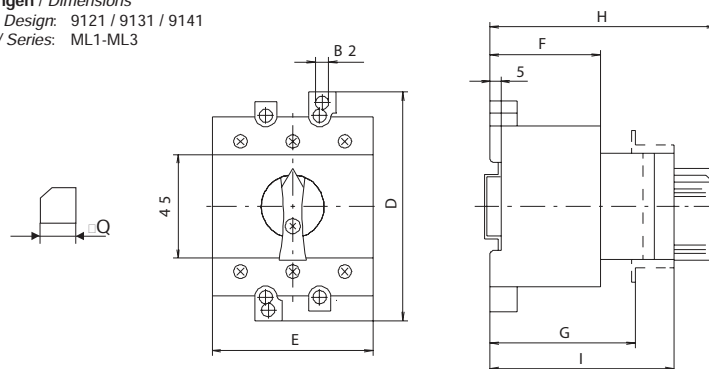


IP 30

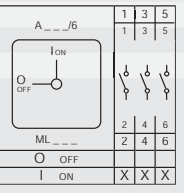
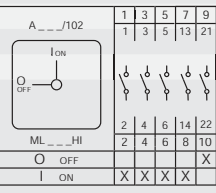
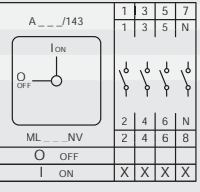
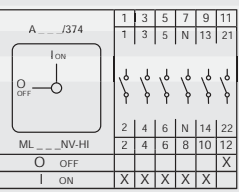
Abmessungen / Dimensions  
Bauforn / Design: 9121  
Baureihe / Series: MLO



Abmessungen / Dimensions  
Bauforn / Design: 9121 / 9131 / 9141  
Baureihe / Series: ML1-ML3



Baureihe Series	Abmessungen (mm) Dimensions (mm)								
	B1	B2	D	E	F	G	H	I	Q
MLO	4,5		50	70		45	31		6
ML1	4,5	4,2	78	52,5	42	48,5	91,5	67,5	6
ML2	5,5	5,5	100	53,5	49		100	79	6
ML3	5,5	5,5	100	70	49		100	79	6

Schaltprogramm Contact arrangement	Dauerstrom I <sub>th</sub> Rated Uninterrupted current I <sub>th</sub> A	Leistung Rating AC 3 kW	Leistung Rating AC 23A kW	Baureihe Series	Griff/ Frontschild handle/ front plate	Typ Type	Best.Nr. Part #
<b>3-polig</b> <b>3-pole</b> 	25	7,5	7,5	ML0	sw/gr bk/gr	ML0-016-3V-9121	<b>MZ 57 328</b>
	32	9	9	ML0	sw/gr bk/gr	ML0-032-3V-9121	<b>MZ 59 328</b>
	25	7,5	11	ML1	sw/gr bk/gr	ML1-025-V-9121	<b>MZ 33 058</b>
	40	11	15	ML1	sw/gr bk/gr	ML1-040-V-9121	<b>MZ 35 058</b>
	63	22	30	ML2	sw/gr bk/gr	ML2-063-V-9131	<b>MZ 37 170</b>
	80	30	37	ML2	sw/gr bk/gr	ML2-080-V-9131	<b>MZ 39 170</b>
	125	37	45	ML3	sw/gr bk/gr	ML3-125-V-9141	<b>MZ 41 170</b>
<b>3-polig + 1S + 1Ö</b> <b>3-pole + 1NC + 1NO</b> 	16	7,5	7,5	ML0	sw/gr bk/gr	ML0-016-3V-9121-HI	<b>MZ 57 390</b>
	32	9	9	ML0	sw/gr bk/gr	ML0-032-3V-9121-HI	<b>MZ 59 390</b>
	25	7,5	11	ML1	sw/gr bk/gr	ML1-025-V-9121-HI	<b>MZ 33 073</b>
	40	11	15	ML1	sw/gr bk/gr	ML1-040-V-9121-HI	<b>MZ 35 073</b>
	63	22	30	ML2	sw/gr bk/gr	ML2-063-V-9131-HI	<b>MZ 37 073</b>
	80	30	37	ML2	sw/gr bk/gr	ML2-080-V-9131-HI	<b>MZ 39 073</b>
	125	37	45	ML3	sw/gr bk/gr	ML3-125-V-9141-HI	<b>MZ 41 073</b>
<b>4-polig</b> <b>4-pole</b> 	16	7,5	7,5	ML0	sw/gr bk/gr	ML0-016-4V-9121	<b>MZ 57 628</b>
	32	9	9	ML0	sw/gr bk/gr	ML0-032-4V-9121	<b>MZ 59 628</b>
	25	7,5	11	ML1	sw/gr bk/gr	ML1-025-V-9121-NV	<b>MZ 33 062</b>
	40	11	15	ML1	sw/gr bk/gr	ML1-040-V-9121-NV	<b>MZ 35 062</b>
	63	22	30	ML2	sw/gr bk/gr	ML2-063-V-9131-NV	<b>MZ 37 062</b>
	80	30	37	ML2	sw/gr bk/gr	ML2-080-V-9131-NV	<b>MZ 39 062</b>
	125	37	45	ML3	sw/gr bk/gr	ML3-125-V-9141-NV	<b>MZ 41 062</b>
<b>4-polig+ 1S + 1Ö</b> <b>4-pole + 1NC + 1NO</b> 	16	7,5	7,5	ML0	sw/gr bk/gr	ML0-016-4V-9121-HI	<b>MZ 57 690</b>
	32	9	9	ML0	sw/gr bk/gr	ML0-032-4V-9121-HI	<b>MZ 59 690</b>
	25	7,5	11	ML1	sw/gr bk/gr	ML1-025-V-9121-NV-HI	<b>MZ 33 106</b>
	40	11	15	ML1	sw/gr bk/gr	ML1-040-V-9121-NV-HI	<b>MZ 35 106</b>
	63	22	30	ML2	sw/gr bk/gr	ML2-063-V-9131-NV-HI	<b>MZ 37 106</b>
	80	30	37	ML2	sw/gr bk/gr	ML2-080-V-9131-NV-HI	<b>MZ 39 106</b>
	125	37	45	ML3	sw/gr bk/gr	ML3-125-V-9141-NV-HI	<b>MZ 41 106</b>